



### Localizare:

An constructie: 1969  
Etaj: 4 / P + 9  
Semidecomandat

3 camere  
Supraf. utilă: 64 mp

#### Proprietar!

Vand apartament cu 3 camere, semidecomandat, 64mp, etaj 6/10, an constructie 1969.

#### ?? Particularitati ale apartamentului:

- Geam la baie
- Ghena in exteriorul palierului
- Scara curata

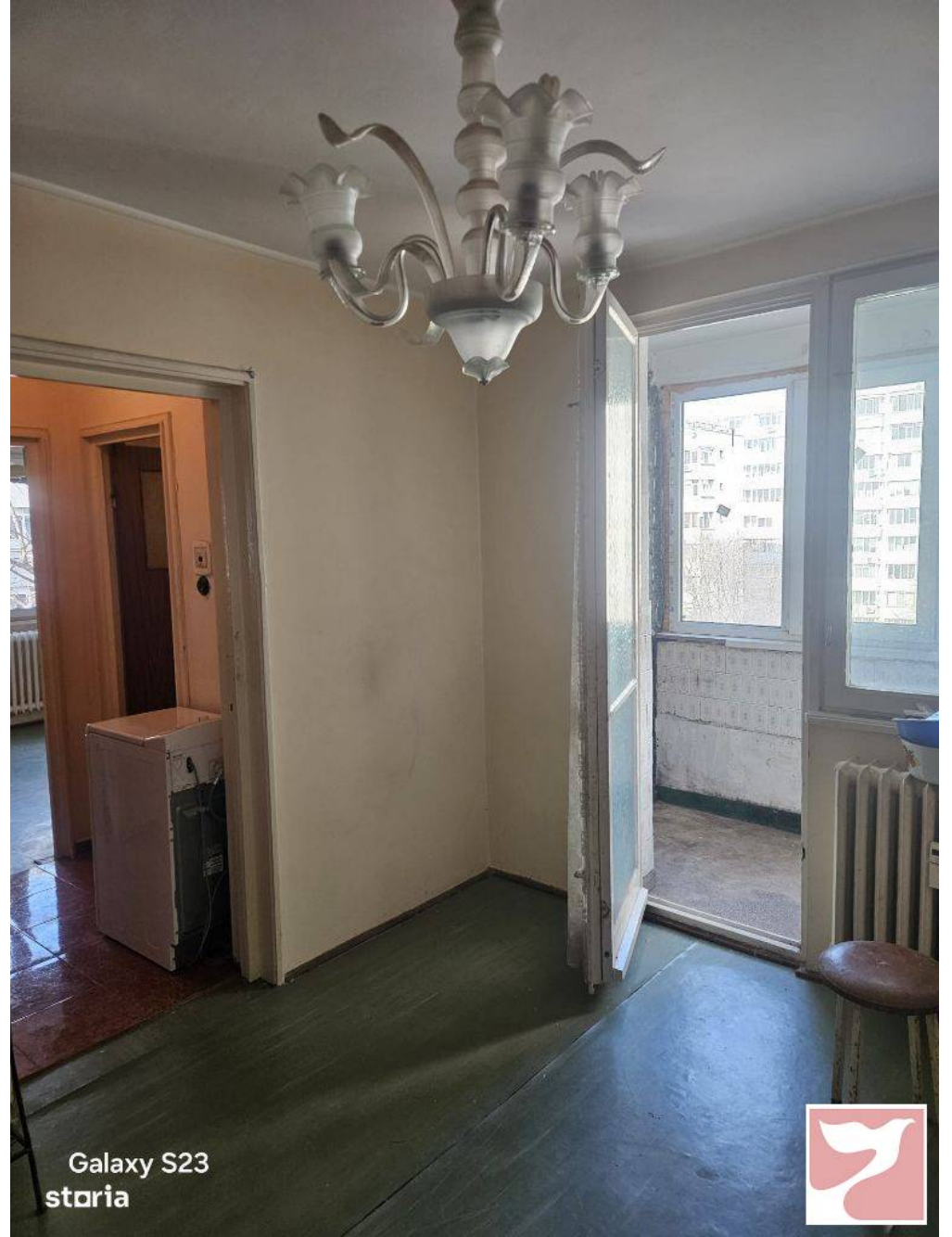
Zona este ideala - Nicolae Grigorescu - Strada Lotrioara nr. 1

#### Puncte de reper:

- 6 min pe jos - metrou Nicolae Grigorescu
- 6 min pe jos - intrarea in parc IOR
- 15 min pe jos - ParkLake Mall
- 15 min pe jos - Piata Salajan
- Multiple gradinite/scoli in proximitate

??ATENTIE. Necesita renovare completa.

# Poze

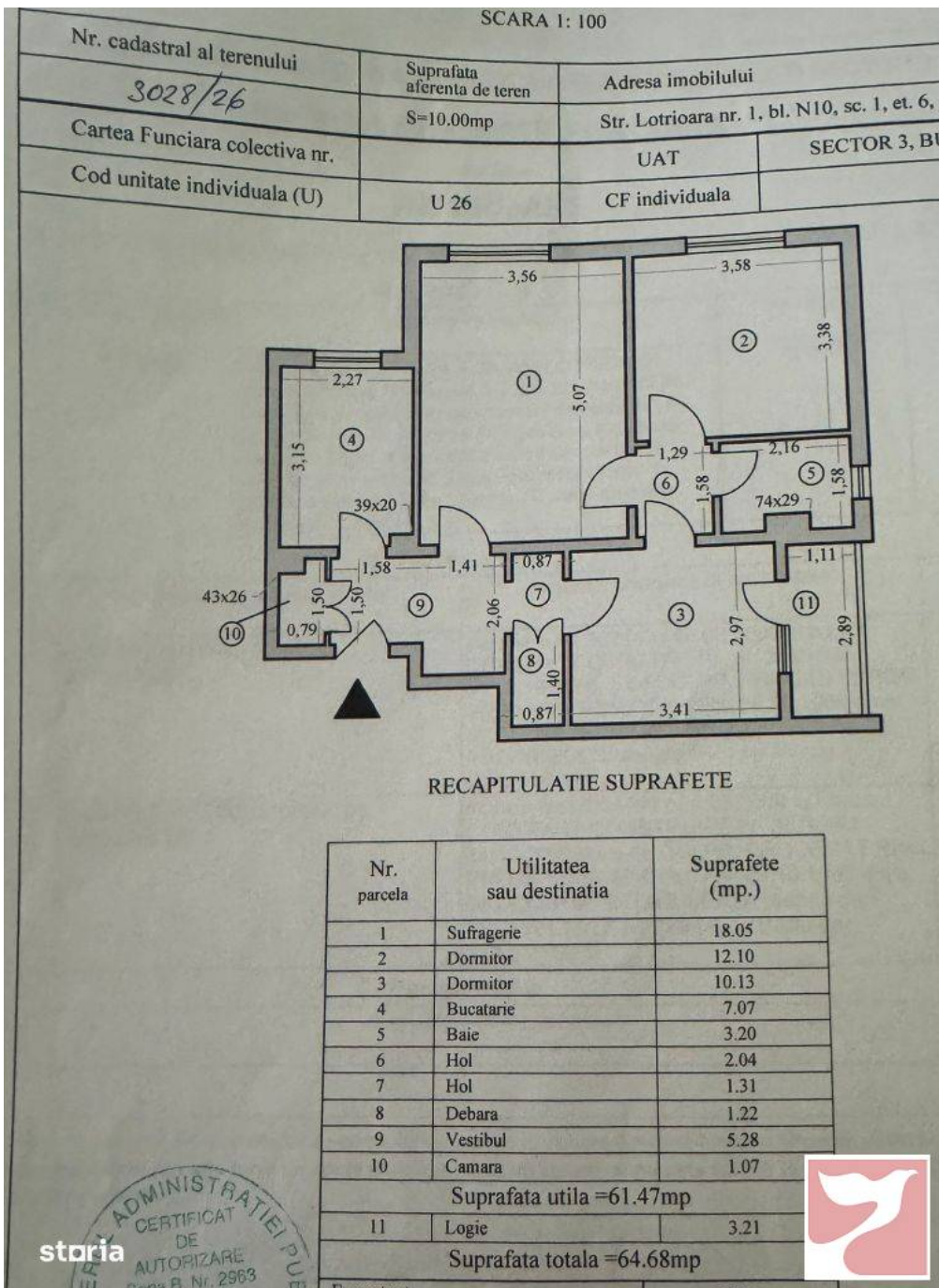




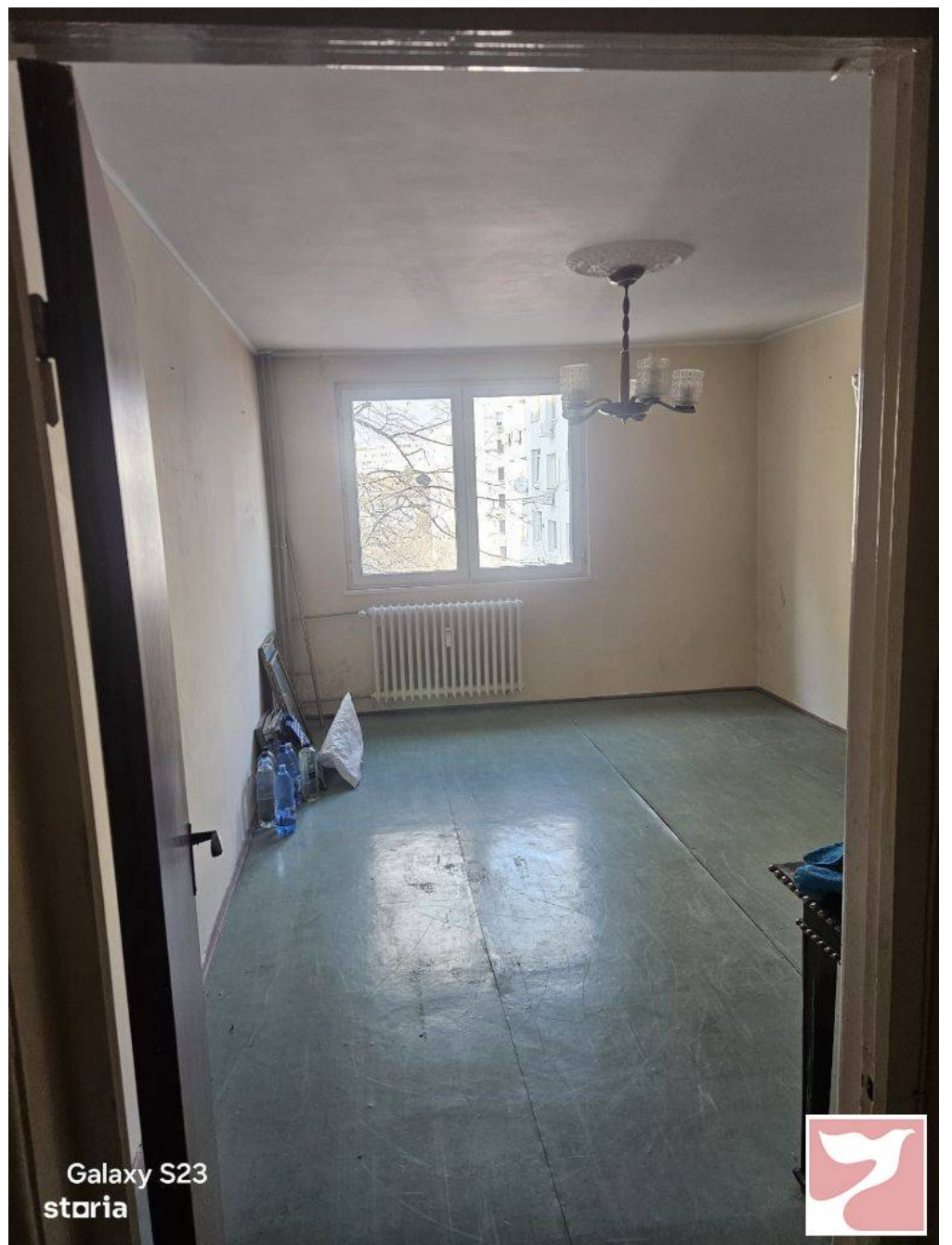
Galaxy S23  
storia



Galaxy S23  
storia



storia



Galaxy S23  
storia

